

EUDAY BOWMAN

Three Ragtimes

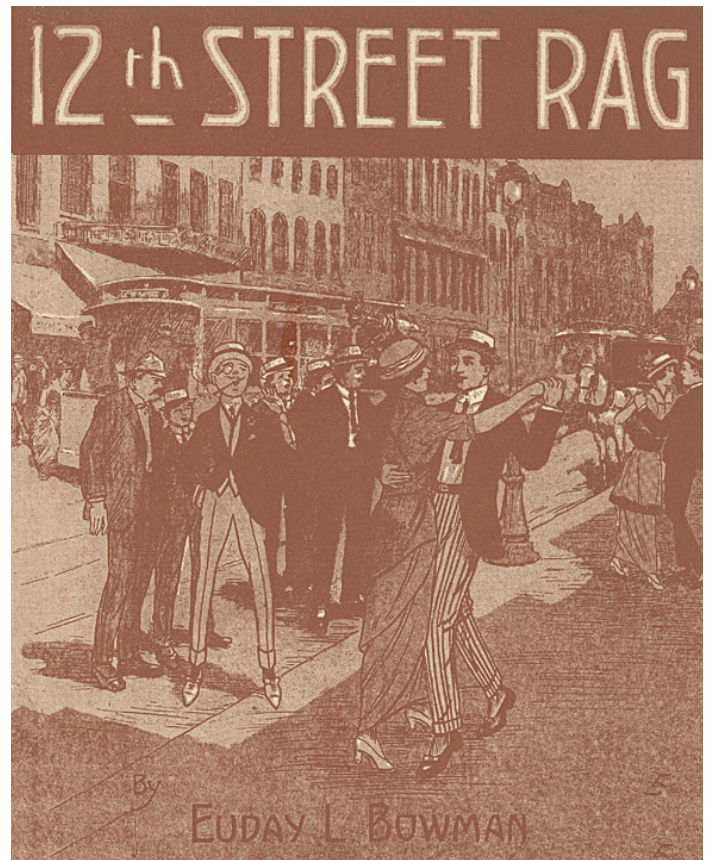
12TH STREET RAG
BLACK AND WHITE RAG
TEXAS STEER RAG

FÜR KLARINETTE UND KLAVIER

THREE RAGTIMES FOR CLARINET AND PIANO

BEARBEITET VON / ARRANGED BY

HEINZ BETHMANN



12th Street

Rag

für Klarinette und Klavier

Euday Bowman (1887-1949)

Arr.: Heinz Bethmann

(♩ = 175)

Klarinette in B

Klavier

f *ff*

8^{va} 8^{va}-1

5

f

9

9

12

12

Black and White Rag

für Klarinette und Klavier

George Botsford (1894-1949)

Arr.: Heinz Bethmann

(♩ = 100)

Klarinette in B

Klavier

8va

mf

8va

mf

8vb

5

mf

10

mf

mf

LH RH LH

sim.

15

mf

1. 2.

Texas Steer Rag

Rag

für Klarinette und Klavier

George Botsford (1894-1949)

Arr.: Heinz Bethmann

(♩ = 100)

Klarinette in B

Klavier

f

mf

5

f

mf

11

f

mf

16

mf

mf

Klarinette in B

12th Street

Rag

für Klarinette und Klavier

Euday Bowman (1887-1949)

Arr.: Heinz Bethmann

(♩ = 175)

4

f

9

14

mf

20

25

30

36

41

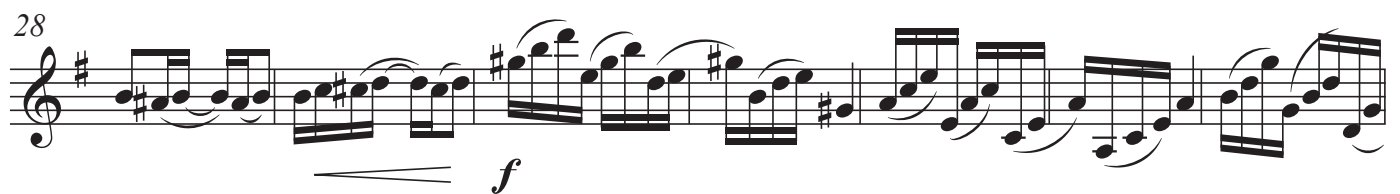
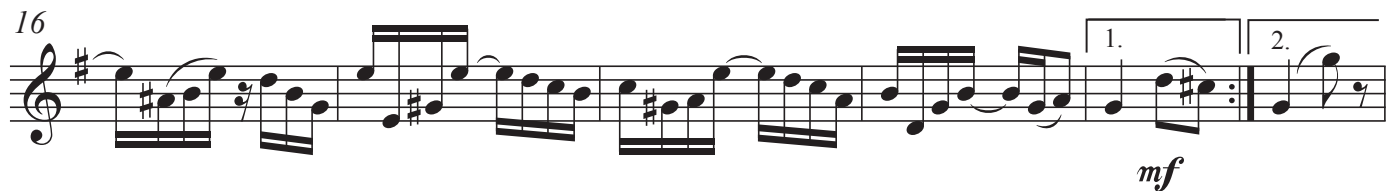
Black and White

Rag
für Klarinette und Klavier

Euday Bowman (1887-1949)

Arr.: Heinz Bethmann

(♩ = 100)



Texas Steer

Rag

für Klarinette und Klavier

Euday Bowman (1887-1949)

Arr.: Heinz Bethmann

(♩ = 100)

4

f

9

2

f

16

mf

21

f

26

mf

31

2

1.

2.

38

f

Detailed description of the musical score: The score is written for a single melodic line in treble clef, 2/4 time. It consists of eight staves of music. The first staff begins with a measure rest of 4 measures, followed by a series of eighth-note patterns with accents and slurs, marked *f*. The second staff continues with similar eighth-note patterns, including a measure rest of 2 measures, also marked *f*. The third staff features a mix of eighth and sixteenth notes, ending with a *mf* dynamic. The fourth staff is a series of eighth-note patterns marked *f*. The fifth staff continues with eighth-note patterns marked *mf*. The sixth staff includes a measure rest of 2 measures, followed by first and second endings. The seventh staff returns to eighth-note patterns marked *f*.